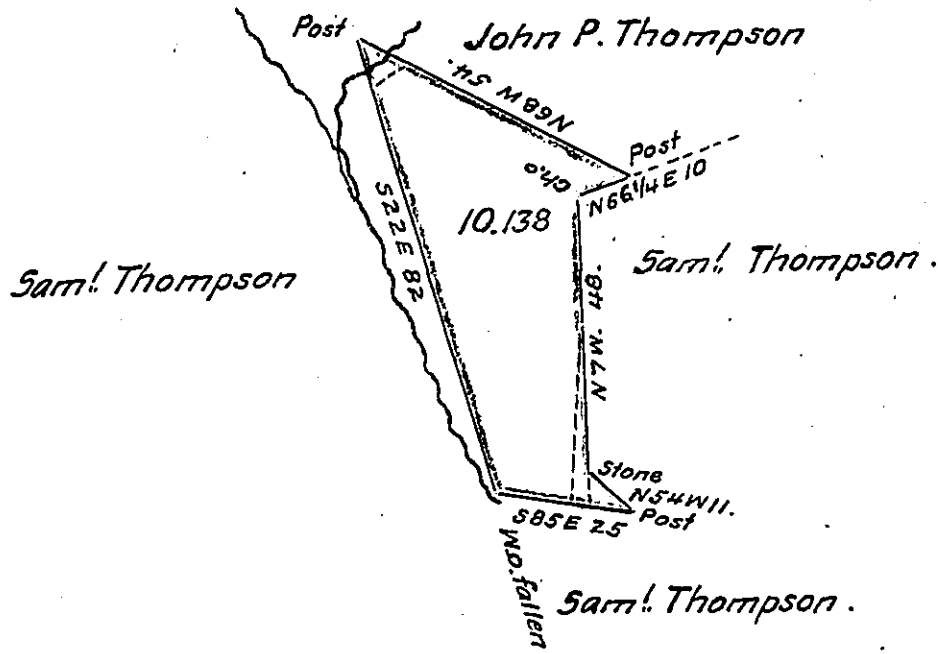


FORM NO 1.

Bear.	Dist.	N.	S.	E	W.	EDD.	W. D.D.	Mult.	N. A.	S.A.
S 22 E.	82.	= =	76.1	30.7	= =	= =	19.4	00.00		
S 85 E.	25	= =	2.2	24.9	= =	55.6	= =	55.6 E		122.32
N 54 W.	11	6.5	= =	= =	8.9	16.0	= =	71.6 E	465.40	
N 7 W.	48	47.6	= =	= =	5.8	= =	14.7	56.9 E	2708.44	
N 66 1/4 E.	10	4.0	= =	9.2	= =	3.4	= =	60.3 E	241.20	
N 68 W.	54.	20.2	= =	= =	50.1	= =	40.9	19.4 E	391.88	

3806.92
 122.32
 2 3684.60
 169.6 1842.30 (10" 138" allow)
 1696
 106 146
 106
 403
 318
 850
 848
 2



Draught of ten acres and one hundred and thirty eight perches of land with Six per Cent allowance for Roads &c. Situated in Delaware Township Juniata County and State of Pennsylvania Surveyed Feb. 17th 1854 on a warrant to John P. Thompson dated January 2nd 1854 for ten Acres.

To J.P. Brawley Esq.
 Surveyor Genl. of Pa.
 Harrisburg Pa.

Per G.W. Jacobs G.S.

Note. - The above is all unimproved except a narrow strip on the right hand side dotted off by the red dotted line and a very small corner on the upper left hand Corner dotted off also.

G.W. Jacobs.

IN TESTIMONY that the above is a copy of the original remaining on file in the Department of Internal Affairs of Pennsylvania, made conformably to an Act of Assembly approved the 16th day of February, 1833, I have hereunto set my Hand and caused the Seal of said Department to be affixed at Harrisburg, this twentieth day of May 1908

Henry Howe

Secretary of Internal Affairs.